

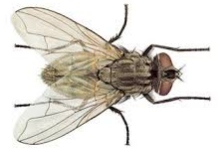
WORKSHEET – 8 (A TREAT FOR MOSQUITOES)

K.V. \_\_\_\_\_ DATE \_\_\_\_\_

CLASS \_\_\_\_\_ SUBJECT \_\_\_\_\_ LESSON \_\_\_\_\_ TOPIC \_\_\_\_\_

NAME OF STUDENT \_\_\_\_\_

Q 1) Identify the pictures of mosquitoes/flies and write their names against the pictures given below



\_\_\_\_\_

Q 2) A patient is suffering from soft bones, bow legs, pale face and weakness. Suppose you are a doctor, so identify the disease and write the following observations.

Name of disease \_\_\_\_\_

Caused by \_\_\_\_\_

Preventive measures \_\_\_\_\_

Q 3) Write the common features between housefly and butterfly.

Housefly

Butterfly

\_\_\_\_\_

\_\_\_\_\_

Q 4) Write the common features between mosquito and housefly

Mosquito

Housefly

_____	_____
_____	_____

Q 5) What is difference between typhoid and anaemia

Typhoid

Anaemia

_____	_____
_____	_____

Q 6) An insect has two pairs of thoracic wings, six pairs of thoracic legs and has long proboscis. Identify the type of insect and write its two characteristic features.

Name \_\_\_\_\_

Two characteristic features

1) \_\_\_\_\_

2) \_\_\_\_\_

Grade

Teacher Signature