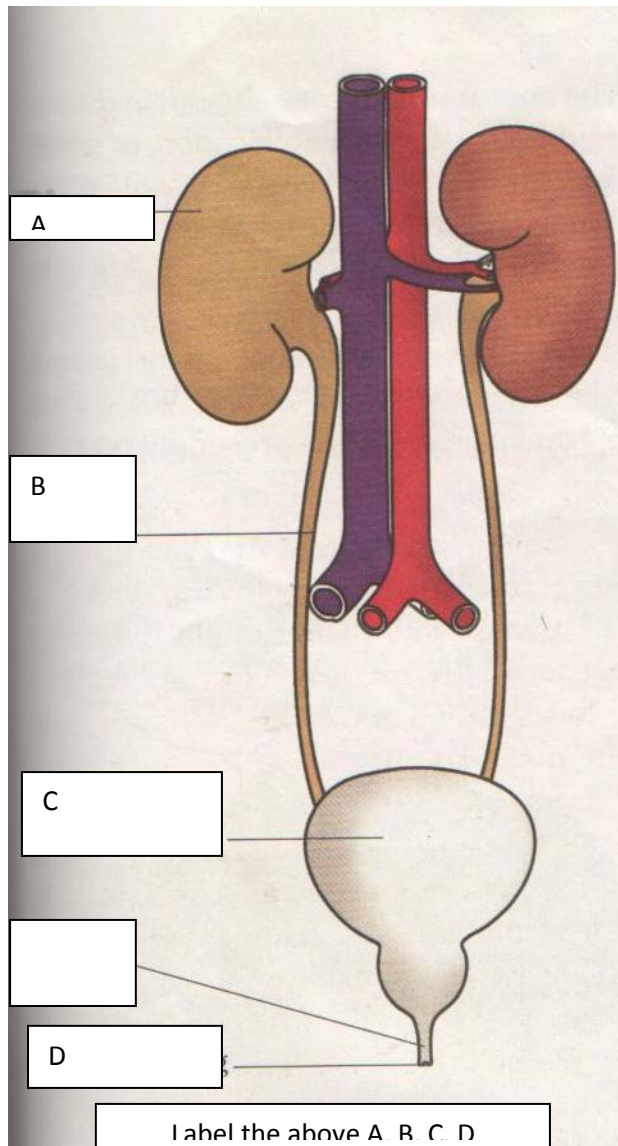


Fri – Science

1. Diagram



- a. Label the parts A, B, C, D
- b. What does the above diagram represent.
- c. Write in one line the function of A, B, C and D in the above diagram.

2. Identify Who am I

- a. I give red colour to blood

- b. I am used to measure your heart beat.
- c. I fight against germs, which enter your body.
- d. I am the fluid part of the blood.