

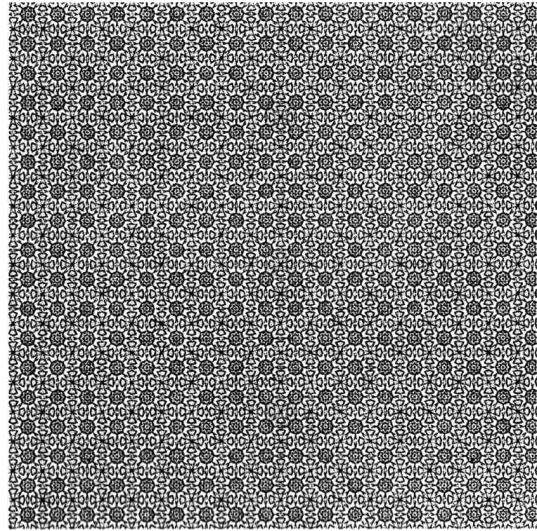
INSTRUCTIONS TO CANDIDATES

The Candidate shall

1. Produce the admission card on demand to competent authorities during the examination.
2. Enter the seat number and other particulars in the space provided on every main answer book and supplement.
3. Verify that the Block Supervisor has signed in the appropriate space on the main answer book and also the supplements.
4. Not be allowed to leave the examination hall during the first ONE HOUR and also the last TEN minutes of the examination.
5. Not damage/scribble the seat no./ barcode sticker.
6. Not indulge in any malpractice like.
 - Carrying written material into the examination hall.
 - Communicating in any manner with other candidates in the examination hall.
 - Passing slips of paper, answer book or supplements to other candidates.
 - Impersonating another candidates.
 - Attaching currency notes to the answer books.
 - Copying from another candidate or vice versa.
 - Leaving the examination hall without submitting answer book to the supervisor.
 - Using of coloured thread to tie answer books.
7. Abide by the rules of dicipline.
8. Stop writing on the answer book after the ringing of the final bell.
9. Stick the hollow craft sticker on the main answer book as well as on the supplement after the final bell.
10. Not leave the seat till all answer books are collected and counted by the supervisor.

NOTE :

Candidate shall be liable for penalty imposed by the board for the violation of any or all of the above clauses.



Pg No.	Examiner	Moderator	Chief Moderator
03			
04 & 05			
06 & 07			
08 & 09			
10 & 11			
12 & 13			
14 & 15			
16 & 17			
18 & 19			
20 & 21			
22 & 23			
24			
TOTAL			
Total in words			
Apptt. No.			
Sign			
Verification			

2024 III 02

0930

Marks	E	M	CM	3
Pg. 3				

Time : 3 Hours

PSYCHOLOGY (CWSN)

Subject Code

H	4	7	5	5
---	---	---	---	---

Total No. of Questions : 52

(Printed Pages : 24)

Maximum Marks : 80

INSTRUCTIONS : (i) The question paper consists of 5 parts. Marks for each question are indicated against it.

(ii) All questions are compulsory.

Part-A : Consists of Multiple Choice Questions.

Part-B : Consists of True/False statements.

Part-C : Consists of Match the Columns.

Part-D : Consists of questions to be answered in 2 points each.

Part-E : Consists of drawing labelled diagrams.

In Part-E, alternate questions are set instead of diagrams for visually impaired students only.

(iii) This is a question paper cum answer booklet. Answer should be written in the space provided below each question.

H-4755

P.T.O.

Part-A

1. An indepth study of the individual in terms of his/her psychological attributes, psychological history in the context of his/her psycho-social and physical environment is called 1

- Psychological test
- Interview
- Case Study
- Observation.

Answer

2. Tests that require subjects to manipulate objects and other materials to perform a task are called 1

- Verbal tests
- Random tests
- Non-verbal tests
- Performance tests

Answer

3. The concept of Emotional Intelligence was given by 1

- Salovey and Mayer
- William Stern
- Alfred Binet
- None of the above

Answer

Marks	E	M	CM	5
Pg. 4 & 5				

4. An individual's preference for engaging in one or more specific activities relative to others is called 1

- Intelligence
- Values
- Interest
- Personality

Answer

5. The biological age from birth is called 1

- Intelligence Quotient
- Chronological age
- Aptitude
- None of the above

Answer

6. Moving into a new house is an example of 1

- Life events
- Natural events
- Traumatic events
- None of the above

Answer

7. The reaction to external stressors is called 1

- Thinking
- Distress
- Strain
- Change

Answer

8. A technique which involves a subjective experience using imagery and imagination is called 1

- Diet
- Support
- Exercise
- Creative visualisation

Answer

9. The strategy which involves denying or minimising the seriousness of the situation is called 1

- Task-oriented strategy
- Perfectionism
- Avoidance-oriented strategy
- Self-care

Answer

Marks	E	M	CM
Pg. 6 & 7			

7

10. Reassuring the individual that he/she is loved, valued and cared for is called 1

- Informational support
- Emotional support
- Tangible support
- None of the above

Answer

11. In PTSD, bodily exhaustion, difficulty in sleeping, change in the eating pattern and increased blood pressure are signs of 1

- Immediate reactions
- Emotional reactions
- Social reactions
- Physical reactions

Answer

12. The approach which suggests that the environment is something to be respected and valued rather than exploited is called 1

- Minimalist perspective
- Instrumental perspective
- Spiritual perspective
- None of the above

Answer

13. A criminal may beat up a person in the community for mentioning his name to the police. This is an example of 1

- Frustration
- Hostile aggression
- Peace
- Instrumental aggression

Answer

14. An actual shortage of the resources necessary for living is called 1

- Discrimination
- Aggression
- Poverty
- Violence

Answer

15. The study of the relationship between living beings and their environment is called 1

- Ecology
- Sociology
- Anthropology
- Geology

Answer

Marks	E	M	CM
Pg. 8 & 9			

9

16. Loss or decrease in privacy is a feature of 1

- Pollution
- Crowding
- Noise
- Natural disaster

Answer

17. Proficiency that is acquired through training and experience is defined as 1

- Skill
- Communication
- Transmitter
- All of the above

Answer

18. The third stage of an interview is called 1

- Opening of the interview
- Body of the interview
- Starting of the interview
- Closing the interview

Answer

19. The process by which the symbols are interpreted by the receiver is called 1

- Noise
- Decoding
- Source
- Encoding

Answer

20. Face-to-face conversations and small group discussions are examples of 1

- Intrapersonal communication
- Public communication
- Interpersonal communication
- All of the above

Answer

21. All those messages that people exchange besides words is called 1

- Body language
- Sender
- Interpretation
- Speaking

Answer

Marks	E	M	CM	11
Pg. 10 & 11				

Part-B

State whether the following statements are True/False :

22. Psychologists are not trained in making formal assessment of psychological attributes. (True/False) 1

Answer

23. In the Structure-of-Intellect model of intelligence, 'Operations' are what the respondent does. (True/False) 1

Answer

24. Case studies are widely used by clinical psychologists. (True/False) 1

Answer

25. Children with an I.Q. range of 70-79 are described as superior.(True/False) 1

Answer

26. The Sanskrit word for intelligence is 'Buddhi'. (True/False) 1

Answer

27. Assertiveness is the ability to say 'yes' to a request. (True/False) 1

Answer

28. Emotion-oriented strategy involves venting feelings of anger and frustration. (True/False) 1

Answer

29. Physical stresses are demands that change the state of our mind. (True/False) 1
Answer
30. Optimists use more problem-focused coping strategies. (True/False) 1
Answer
31. Attending parties may not be stressful for a person who likes to spend quiet evenings at home. (True/False) 1
Answer
32. 'I must do everything perfectly' is an example of social pressure. (True/False) 1
Answer
33. Frustration is a cause of aggression. (True/False) 1
Answer
34. Natural disasters are stressful experiences that are result of nature's fury. (True/False) 1
Answer
35. Continued exposure to uncontrollable and annoying noise may lead to hearing loss. (True/False) 1
Answer
36. Pro-environmental behaviour include actions that do not protect the environment from problems. (True/False) 1
Answer

Marks	E	M	CM	13
Pg. 12 & 13				

37. Making rules regarding noisy music at certain hours can help in reducing noise pollution. (True/False) 1

Answer

38. Watching television does not reduce children’s habit of reading and writing and also their outdoor activities. (True/False) 1

Answer

39. In participant observation, the observer is actively involved in the process of observing by becoming an active member of the setting. (True/False) 1

Answer

40. Counselling is a helping relationship. (True/False) 1

Answer

41. In intrapersonal communication, a speaker sends a message to an audience. (True/False) 1

Answer

42. Close-ended questions do not provide response alternatives. (True/False) 1

Answer

43. Confidentiality and privacy constitute essential ingredients in the counselling setting. (True/False) 1

Answer

Marks	E	M	CM	15
Pg. 14 & 15				

- (iii) Developmental period (c)
-
-
- (iv) Eustress (d)
-
-
- (v) Hardiness (e)
-
-
- (vi) Stress Inoculation Training (f)
-
-
- (vii) Emotional effects of stress (g)
-
-
- (viii) Tangible support (h)
-
-

45. Match the following columns :

Column 1	Column 2
(i) Natural environment	(a) Frustration-Aggression theory
(ii) PTSD	(b) Intensity, Predictability and Controllability
(iii) John Dollard	(c) Radio, TV, films, newspapers and magazines
(iv) Catharsis	(d) Post-Traumatic Stress Disorder
(v) Characteristics of noise	(e) Part of the nature that is untouched by human hand
(vi) Minimalist perspective	(f) Set of questions used for an interview
(vii) Channel	(g) What is 'bottled up' gets an outlet
(viii) Interview schedule	(h) Stimulus which the source transmits to the receiver
(ix) Message	(i) Physical environment and human beings exist as parallel components

Column 1	Column 2
(i) Natural environment	(a)

(ii) PTSD	(b)

Marks	E	M	CM
Pg. 16 & 17			

17

-
- (iii) John Dollard (c)
.....
.....
 - (iv) Catharsis (d)
.....
.....
 - (v) Characteristics of noise (e)
.....
.....
 - (vi) Minimalist perspective (f)
.....
.....
 - (vii) Channel (g)
.....
.....
 - (viii) Interview schedule (h)
.....
.....
 - (ix) Message (i)
.....
.....

Part-D

46. State one point of difference between Creativity Tests and Intelligence Tests. 2

Answer :

.....

.....

.....

.....

.....

.....

.....

.....

.....

47. State *two* points on 'Time Management'. 2

Answer :

.....

.....

.....

.....

.....

.....

.....

.....

.....

Marks	E	M	CM
Pg. 18 & 19			

19

48. Explain 'Exercise' as a stress management technique. 2

Answer :

.....

.....

.....

.....

.....

.....

.....

.....

49. State *two* promotive actions to protect environment from pollution. 2

Answer :

.....

.....

.....

.....

.....

.....

.....

50. Write *two* disadvantages of the observation. 2

Answer :

.....

.....

.....

.....

.....

.....

.....

.....

Part-E

51. Draw the Normal Distribution Curve and show the percentage wise distribution of I.Q. Scores. 5

Or

Alternate question given below is for visually impaired students only.

- State *five* characteristics of gifted children.

Answer :

.....

.....

