



NCERT Solutions for 11th Class Physics: Chapter 11- Thermal Properties of Matter



indCareer



indCareer



indCareer

NCERT Solutions for 11th Class Physics: Chapter 11- Thermal Properties of Matter

Class 11: Physics Chapter 11 solutions. Complete Class 11 Physics Chapter 11 Notes.

NCERT Solutions for 11th Class Physics: Chapter 11- Thermal Properties of Matter

NCERT 11th Physics Chapter 11, class 11 Physics chapter 11 solutions

Page No: 294

<https://www.indcareer.com/schools/ncert-solutions-for-11th-class-physics-chapter-11-thermal-properties-of-matter/>

Exercises

11.1. The triple points of neon and carbon dioxide are 24.57 K and 216.55 K respectively. Express these temperatures on the Celsius and Fahrenheit scales.

Answer

Kelvin and Celsius

scales are related as:

$$T_C = T_K - 273.15 \dots \text{(i)}$$

Celsius and Fahrenheit scales are related as:

$$T_F = (9/5)T_C + 32 \dots \text{(ii)}$$

For neon:

$$T_K = 24.57 \text{ K}$$

$$\therefore T_C = 24.57 - 273.15 = -248.58^\circ\text{C}$$

$$T_F = (9/5)T_C + 32$$

$$= (9/5) \times (-248.58) + 32$$

$$= 415.44^\circ\text{F}$$

$$T_K = 216.55 \text{ K}$$

$$\therefore T_C = 216.55 - 273.15 = -56.60^\circ\text{C}$$

$$T_F = (9/5)T_C + 32$$

$$= (9/5) \times (-56.60) + 32$$

$$= -69.88^\circ\text{C}$$

<https://www.indcareer.com/schools/ncert-solutions-for-11th-class-physics-chapter-11-thermal-properties-of-matter/>

11.2. Two absolute scales A and B have triple points of water defined to be 200 A and 350 B. What is the relation between T_A and T_B ?

Answer

Triple point of water on absolute scale A, $T_1 = 200$ A

Triple point of water on absolute scale B, $T_2 = 350$ B

Triple point of water on Kelvin scale, $T_K = 273.15$ K

The temperature 273.15 K on Kelvin scale is equivalent to 200 A on absolute scale A.

$$T_1 = T_K$$

$$200 \text{ A} = 273.15 \text{ K}$$

$$\therefore \text{A} = 273.15/200$$

The temperature 273.15 K on Kelvin scale is equivalent to 350 B on absolute scale B.

$$T_2 = T_K$$

$$350 \text{ B} = 273.15$$

$$\therefore \text{B} = 273.15/350$$

T_A is triple point of water on scale A.

T_B is triple point of water on scale B.

$$\therefore 273.15/200 \times T_A = 273.15/350 \times T_B$$

Therefore, the ratio $T_A : T_B$ is given as 4 : 7.

<https://www.indcareer.com/schools/ncert-solutions-for-11th-class-physics-chapter-11-thermal-properties-of-matter/>

NCERT 11th Physics Chapter 11, class 11 Physics chapter 11 solutions

11.3. The electrical resistance in ohms of a certain thermometer varies with temperature according to the approximate law:

$$R = R_0 [1 + \alpha (T - T_0)]$$

The resistance is 101.6 Ω at the triple-point of water 273.16 K, and 165.5 Ω at the normal melting point of lead (600.5 K). What is the temperature when the resistance is 123.4 Ω ?

Answer

It is given that:

$$R = R_0 [1 + \alpha (T - T_0)] \dots \text{(i)}$$

where,

R_0 and T_0 are the initial resistance and temperature respectively

R and T are the final resistance and temperature respectively

α is a constant

At the triple point of water, $T_0 = 273.15$ K

Resistance of lead, $R_0 = 101.6$ Ω

At normal melting point of lead, $T = 600.5$ K

Resistance of lead, $R = 165.5$ Ω

Substituting these values in equation (i), we get:

$$R = R_0 [1 + \alpha (T - T_0)]$$

$$165.5 = 101.6 [1 + \alpha(600.5 - 273.15)]$$

<https://www.indcareer.com/schools/ncert-solutions-for-11th-class-physics-chapter-11-thermal-properties-of-matter/>

$$1.629 = 1 + \alpha (327.35)$$

$$\therefore \alpha = 0.629 / 327.35 = 1.92 \times 10^{-3} \text{ K}^{-1}$$

For resistance, $R_1 = 123.4 \Omega$

$$R_1 = R_0 [1 + \alpha (T - T_0)]$$

where,

T is the temperature when the resistance of lead is 123.4Ω

$$123.4 = 101.6 [1 + 1.92 \times 10^{-3}(T - 273.15)]$$

Solving for T , we get

$$T = 384.61 \text{ K.}$$

11.4. Answer the following:

(a) The triple-point of water is a standard fixed point in modern thermometry. Why? What is wrong in taking the melting point of ice and the boiling point of water as standard fixed points (as was originally done in the Celsius scale)?

(b) There were two fixed points in the original Celsius scale as mentioned above which were assigned the number 0°C and 100°C respectively. On the absolute scale, one of the fixed points is the triple-point of water, which on the Kelvin absolute scale is assigned the number 273.16 K . What is the other fixed point on this (Kelvin) scale?

(c) The absolute temperature (Kelvin scale) T is related to the temperature t_c on the Celsius scale by

$$t_c = T - 273.15$$

<https://www.indcareer.com/schools/ncert-solutions-for-11th-class-physics-chapter-11-thermal-properties-of-matter/>

Why do we have 273.15 in this relation, and not 273.16?

(d) What is the temperature of the triple-point of water on an absolute scale whose unit interval size is equal to that of the Fahrenheit scale?

Answer

(a) The triple point of water has a unique value of 273.16 K. At particular values of volume and pressure, the triple point of water is always 273.16 K. The melting point of ice and boiling point of water do not have particular values because these points depend on pressure and temperature.

(b) The absolute zero or 0 K is the other fixed point on the Kelvin absolute scale.

(c) The temperature 273.16 K is the triple point of water. It is not the melting point of ice. The temperature 0°C on Celsius scale is the melting point of ice. Its corresponding value on Kelvin scale is 273.15 K.

Hence, absolute temperature (Kelvin scale) T , is related to temperature t_c , on Celsius scale as:

$$t_c = T - 273.15$$

(d) Let T_F be the temperature on Fahrenheit scale and T_K be the temperature on absolute scale. Both the temperatures can be related as:

$$(T_F - 32) / 180 = (T_K - 273.15) / 100 \quad \dots\text{(i)}$$

Let T_{F1} be the temperature on Fahrenheit scale and T_{K1} be the temperature on absolute scale. Both the temperatures can be related as:

$$(T_{F1} - 32) / 180 = (T_{K1} - 273.15) / 100 \quad \dots\text{(ii)}$$

It is given that:

<https://www.indcareer.com/schools/ncert-solutions-for-11th-class-physics-chapter-11-thermal-properties-of-matter/>

$$T_{K1} - T_K = 1 \text{ K}$$

Subtracting equation (i) from equation (ii), we get:

$$(T_{F1} - T_F) / 180 = (T_{K1} - T_K) / 100 = 1 / 100$$

$$T_{F1} - T_F = (1 \times 180) / 100 = 9/5$$

Triple point of water = 273.16 K

$$\therefore \text{Triple point of water on absolute scale} = 273.16 \times (9/5) = 491.69$$

NCERT 11th Physics Chapter 11, class 11 Physics chapter 11 solutions

Page No: 295

11.5. Two ideal gas thermometers A and B use oxygen and hydrogen respectively. The following observations are made:

Temperature	Pressure thermometer A	Pressure thermometer B
Triple-point of water	$1.250 \times 10^5 \text{ Pa}$	$0.200 \times 10^5 \text{ Pa}$
Normal melting point of sulphur	$1.797 \times 10^5 \text{ Pa}$	$0.287 \times 10^5 \text{ Pa}$

(a) What is the absolute temperature of normal melting point of sulphur as read by thermometers A and B?

(b) What do you think is the reason behind the slight difference in answers of thermometers A and B? (The thermometers are not faulty). What further procedure is needed in the experiment to reduce the discrepancy between the two readings?

<https://www.indcareer.com/schools/ncert-solutions-for-11th-class-physics-chapter-11-thermal-properties-of-matter/>

Answer

(a) Triple point of water, $T = 273.16$ K.

At this temperature, pressure in thermometer A, $P_A = 1.250 \times 10^5$ Pa

Let T_1 be the normal melting point of sulphur.

At this temperature, pressure in thermometer A, $P_1 = 1.797 \times 10^5$ Pa

According to Charles' law, we have the relation:

$$P_A / T = P_1 / T_1$$

$$\therefore T_1 = (P_1 T) / P_A = (1.797 \times 10^5 \times 273.16) / (1.250 \times 10^5)$$

$$= 392.69 \text{ K}$$

Therefore, the absolute temperature of the normal melting point of sulphur as read by thermometer A is 392.69 K.

At triple point 273.16 K, the pressure in thermometer B, $P_B = 0.200 \times 10^5$ Pa

At temperature T_1 , the pressure in thermometer B, $P_2 = 0.287 \times 10^5$ Pa

According to Charles' law, we can write the relation:

$$P_B / T = P_1 / T_1$$

$$(0.200 \times 10^5) / 273.16 = (0.287 \times 10^5) / T_1$$

$$\therefore T_1 = [(0.287 \times 10^5) / (0.200 \times 10^5)] \times 273.16 = 391.98 \text{ K}$$

Therefore, the absolute temperature of the normal melting point of sulphur as read by thermometer B is 391.98 K.

(b) The oxygen and hydrogen gas present in thermometers A and B respectively are not perfect ideal gases. Hence, there is a slight difference between the readings of thermometers A and B.

To reduce the discrepancy between the two readings, the experiment should be carried under low pressure conditions. At low pressure, these gases behave as perfect ideal gases.

NCERT 11th Physics Chapter 11, class 11 Physics chapter 11 solutions

11.6. A steel tape 1m long is correctly calibrated for a temperature of 27.0 °C. The length of a steel rod measured by this tape is found to be 63.0 cm on a hot day when the temperature is 45.0 °C. What is the actual length of the steel rod on that day? What is the length of the same steel rod on a day when the temperature is 27.0 °C? Coefficient of linear expansion of steel = $1.20 \times 10^{-5} \text{ K}^{-1}$.

Answer

Length of the steel tape at temperature $T = 27^\circ\text{C}$, $l = 1 \text{ m} = 100 \text{ cm}$

At temperature $T_1 = 45^\circ\text{C}$, the length of the steel rod, $l_1 = 63 \text{ cm}$

Coefficient of linear expansion of steel, $\alpha = 1.20 \times 10^{-5} \text{ K}^{-1}$

Let l_2 be the actual length of the steel rod and l' be the length of the steel tape at 45°C .

$$l' = l + \alpha l(T_1 - T)$$

$$\therefore l' = 100 + 1.20 \times 10^{-5} \times 100(45 - 27)$$

$$= 100.0216 \text{ cm}$$

Hence, the actual length of the steel rod measured by the steel tape at 45°C can be calculated as:

<https://www.indcareer.com/schools/ncert-solutions-for-11th-class-physics-chapter-11-thermal-properties-of-matter/>

$$l_2 = (100.0216 / 100) \times 63 = 63.0136 \text{ cm}$$

Therefore, the actual length of the rod at 45.0°C is 63.0136 cm . Its length at 27.0°C is 63.0 cm .

NCERT 11th Physics Chapter 11, class 11 Physics chapter 11 solutions

11.7. A large steel wheel is to be fitted on to a shaft of the same material. At 27°C , the outer diameter of the shaft is 8.70 cm and the diameter of the central hole in the wheel is 8.69 cm . The shaft is cooled using ‘dry ice’. At what temperature of the shaft does the wheel slip on the shaft? Assume coefficient of linear expansion of the steel to be constant over the required temperature range: $\alpha_{\text{steel}} = 1.20 \times 10^{-5} \text{ K}^{-1}$.

Answer

The given temperature, $T = 27^\circ\text{C}$ can be written in Kelvin as:

$$27 + 273 = 300 \text{ K}$$

Outer diameter of the steel shaft at T , $d_1 = 8.70 \text{ cm}$

Diameter of the central hole in the wheel at T , $d_2 = 8.69 \text{ cm}$

Coefficient of linear expansion of steel, $\alpha_{\text{steel}} = 1.20 \times 10^{-5} \text{ K}^{-1}$

After the shaft is cooled using ‘dry ice’, its temperature becomes T_1 .

The wheel will slip on the shaft, if the change in diameter, $\Delta d = 8.69 - 8.70$
 $= - 0.01 \text{ cm}$

Temperature T_1 , can be calculated from the relation:

$$\Delta d = d_1 \alpha_{\text{steel}} (T_1 - T)$$

$$0.01 = 8.70 \times 1.20 \times 10^{-5} (T_1 - 300)$$

<https://www.indcareer.com/schools/ncert-solutions-for-11th-class-physics-chapter-11-thermal-properties-of-matter/>

$$(T_1 - 300) = 95.78$$

$$\therefore T_1 = 204.21 \text{ K}$$

$$= 204.21 - 273.16$$

$$= -68.95^\circ\text{C}$$

Therefore, the wheel will slip on the shaft when the temperature of the shaft is -69°C .

NCERT 11th Physics Chapter 11, class 11 Physics chapter 11 solutions

11.8. A hole is drilled in a copper sheet. The diameter of the hole is 4.24 cm at 27.0°C . What is the change in the diameter of the hole when the sheet is heated to 227°C ? Coefficient of linear expansion of copper = $1.70 \times 10^{-5} \text{ K}^{-1}$.

Answer

Initial temperature, $T_1 = 27.0^\circ\text{C}$

Diameter of the hole at T_1 , $d_1 = 4.24 \text{ cm}$

Final temperature, $T_2 = 227^\circ\text{C}$

Diameter of the hole at $T_2 = d_2$

Co-efficient of linear expansion of copper, $\alpha_{\text{Cu}} = 1.70 \times 10^{-5} \text{ K}^{-1}$

For co-efficient of superficial expansion β , and change in temperature ΔT , we have the relation:

Change in area (ΔA) / Original area (A) = $\beta\Delta T$

$$[(\pi d_2^2 / 4) - (\pi d_1^2 / 4)] / (\pi d_1^2 / 4) = \Delta A / A$$

$$\therefore \Delta A / A = (d_2^2 - d_1^2) / d_1^2$$

<https://www.indcareer.com/schools/ncert-solutions-for-11th-class-physics-chapter-11-thermal-properties-of-matter/>

But $\beta = 2\alpha$

$$\therefore (d_2^2 - d_1^2) / d_1^2 = 2\alpha\Delta T$$

$$(d_2^2 / d_1^2) - 1 = 2\alpha(T_2 - T_1)$$

$$d_2^2 / 4.24^2 = 2 \times 1.7 \times 10^{-5} (227 - 27) + 1$$

$$d_2^2 = 17.98 \times 1.0068 = 18.1$$

$$\therefore d_2 = 4.2544 \text{ cm}$$

$$\text{Change in diameter} = d_2 - d_1 = 4.2544 - 4.24 = 0.0144 \text{ cm}$$

Hence, the diameter increases by 1.44×10^{-2} cm.

NCERT 11th Physics Chapter 11, class 11 Physics chapter 11 solutions

11.9. A brass wire 1.8 m long at 27 °C is held taut with little tension between two rigid supports. If the wire is cooled to a temperature of -39 °C, what is the tension developed in the wire, if its diameter is 2.0 mm? Co-efficient of linear expansion of brass = $2.0 \times 10^{-5} \text{ K}^{-1}$; Young's modulus of brass = $0.91 \times 10^{11} \text{ Pa}$.

Answer

Initial temperature, $T_1 = 27^\circ\text{C}$

Length of the brass wire at T_1 , $l = 1.8 \text{ m}$

Final temperature, $T_2 = -39^\circ\text{C}$

Diameter of the wire, $d = 2.0 \text{ mm} = 2 \times 10^{-3} \text{ m}$

Tension developed in the wire = F

Coefficient of linear expansion of brass, $\alpha = 2.0 \times 10^{-5} \text{ K}^{-1}$

<https://www.indcareer.com/schools/ncert-solutions-for-11th-class-physics-chapter-11-thermal-properties-of-matter/>

Young's modulus of brass, $Y = 0.91 \times 10^{11}$ Pa

Young's modulus is given by the relation:

$$\gamma = \text{Stress} / \text{Strain} = (F/A) / (\Delta L/L)$$

$$\Delta L = F X L / (A X Y) \quad \dots\dots\text{(i)}$$

Where,

F = Tension developed in the wire

A = Area of cross-section of the wire.

ΔL = Change in the length, given by the relation:

$$\Delta L = \alpha L(T_2 - T_1) \dots \text{(ii)}$$

Equating equations **(i)** and **(ii)**, we get:

$$\alpha L(T_2 - T_1) = FL / [\pi(d/2)^2 X Y]$$

$$F = \alpha(T_2 - T_1)\pi Y(d/2)^2$$

$$F = 2 \times 10^{-5} \times (-39-27) \times 3.14 \times 0.91 \times 10^{11} \times (2 \times 10^{-3} / 2)^2$$

$$= -3.8 \times 10^2 \text{ N}$$

(The negative sign indicates that the tension is directed inward.)

Hence, the tension developed in the wire is 3.8×10^2 N.

NCERT 11th Physics Chapter 11, class 11 Physics chapter 11 solutions

11.10. A brass rod of length 50 cm and diameter 3.0 mm is joined to a steel rod of the same length and diameter. What is the change in length of the combined rod at 250 °C, if the original

<https://www.indcareer.com/schools/ncert-solutions-for-11th-class-physics-chapter-11-thermal-properties-of-matter/>

lengths are at $40.0\text{ }^{\circ}\text{C}$? Is there a 'thermal stress' developed at the junction? The ends of the rod are free to expand (Co-efficient of linear expansion of brass = $2.0 \times 10^{-5}\text{ K}^{-1}$, steel = $1.2 \times 10^{-5}\text{ K}^{-1}$).

Answer

Initial temperature, $T_1 = 40^{\circ}\text{C}$

Final temperature, $T_2 = 250^{\circ}\text{C}$

Change in temperature, $\Delta T = T_2 - T_1 = 210^{\circ}\text{C}$

Length of the brass rod at T_1 , $l_1 = 50\text{ cm}$

Diameter of the brass rod at T_1 , $d_1 = 3.0\text{ mm}$

Length of the steel rod at T_2 , $l_2 = 50\text{ cm}$

Diameter of the steel rod at T_2 , $d_2 = 3.0\text{ mm}$

Coefficient of linear expansion of brass, $\alpha_1 = 2.0 \times 10^{-5}\text{ K}^{-1}$

Coefficient of linear expansion of steel, $\alpha_2 = 1.2 \times 10^{-5}\text{ K}^{-1}$

For the expansion in the brass rod, we have:

Change in length (Δl_1) / Original length (l_1) = $\alpha_1 \Delta T$

$$\therefore \Delta l_1 = 50 \times (2.1 \times 10^{-5}) \times 210$$

$$= 0.2205\text{ cm}$$

For the expansion in the steel rod, we have:

Change in length (Δl_2) / Original length (l_2) = $\alpha_2 \Delta T$

$$\therefore \Delta l_2 = 50 \times (1.2 \times 10^{-5}) \times 210$$

$$= 0.126\text{ cm}$$

<https://www.indcareer.com/schools/ncert-solutions-for-11th-class-physics-chapter-11-thermal-properties-of-matter/>

Total change in the lengths of brass and steel,

$$\begin{aligned}\Delta l &= \Delta l_1 + \Delta l_2 \\ &= 0.2205 + 0.126 \\ &= 0.346 \text{ cm}\end{aligned}$$

Total change in the length of the combined rod = 0.346 cm

Since the rod expands freely from both ends, no thermal stress is developed at the junction.

NCERT 11th Physics Chapter 11, class 11 Physics chapter 11 solutions

11.11. The coefficient of volume expansion of glycerin is $49 \times 10^{-5} \text{ K}^{-1}$. What is the fractional change in its density for a 30°C rise in temperature?

Answer

Coefficient of volume expansion of glycerin, $\alpha_v = 49 \times 10^{-5} \text{ K}^{-1}$

Rise in temperature, $\Delta T = 30^\circ\text{C}$

Fractional change in its volume = $\Delta V/V$

This change is related with the change in temperature as:

$$\Delta V/V = \alpha_v \Delta T$$

$$V_{T_2} - V_{T_1} = V_{T_1} \alpha_v \Delta T$$

$$(m / \rho_{T_2}) - (m / \rho_{T_1}) = (m / \rho_{T_1}) \alpha_v \Delta T$$

Where,

m = Mass of glycerine

<https://www.indcareer.com/schools/ncert-solutions-for-11th-class-physics-chapter-11-thermal-properties-of-matter/>

ρ_{T_1} = Initial density at T_1

ρ_{T_2} = Initial density at T_2

$(\rho_{T_1} - \rho_{T_2}) / \rho_{T_2}$ = Fractional change in density

\therefore Fractional change in the density of glycerin = $49 \times 10^{-5} \times 30 = 1.47 \times 10^{-2}$.

11.12. A 10 kW drilling machine is used to drill a bore in a small aluminium block of mass 8.0 kg. How much is the rise in temperature of the block in 2.5 minutes, assuming 50% of power is used up in heating the machine itself or lost to the surroundings. Specific heat of aluminium = $0.91 \text{ J g}^{-1} \text{ K}^{-1}$.

Answer

Power of the drilling machine, $P = 10 \text{ kW} = 10 \times 10^3 \text{ W}$

Mass of the aluminum block, $m = 8.0 \text{ kg} = 8 \times 10^3 \text{ g}$

Time for which the machine is used, $t = 2.5 \text{ min} = 2.5 \times 60 = 150 \text{ s}$

Specific heat of aluminium, $c = 0.91 \text{ J g}^{-1} \text{ K}^{-1}$

Rise in the temperature of the block after drilling = δT

Total energy of the drilling machine = Pt

$$= 10 \times 10^3 \times 150$$

$$= 1.5 \times 10^6 \text{ J}$$

It is given that only 50% of the power is useful.

$$\text{Useful energy, } \Delta Q = (50/100) \times 1.5 \times 10^6 = 7.5 \times 10^5 \text{ J}$$

$$\text{But } \Delta Q = mc\Delta T$$

<https://www.indcareer.com/schools/ncert-solutions-for-11th-class-physics-chapter-11-thermal-properties-of-matter/>

$$\begin{aligned}\therefore \Delta T &= \Delta Q / mc \\ &= (7.5 \times 10^5) / (8 \times 10^3 \times 0.91) \\ &= 103^\circ \text{C}\end{aligned}$$

Therefore, in 2.5 minutes of drilling, the rise in the temperature of the block is 103°C .

NCERT 11th Physics Chapter 11, class 11 Physics chapter 11 solutions

11.13. A copper block of mass 2.5 kg is heated in a furnace to a temperature of 500°C and then placed on a large ice block. What is the maximum amount of ice that can melt? (Specific heat of copper = $0.39 \text{ J g}^{-1} \text{ K}^{-1}$; heat of fusion of water = 335 J g^{-1}).

Answer

Mass of the copper block, $m = 2.5 \text{ kg} = 2500 \text{ g}$

Rise in the temperature of the copper block, $\Delta\theta = 500^\circ\text{C}$

Specific heat of copper, $C = 0.39 \text{ J g}^{-1} \text{ }^\circ\text{C}^{-1}$

Heat of fusion of water, $L = 335 \text{ J g}^{-1}$

The maximum heat the copper block can lose, $Q = mC\Delta\theta$

$$= 2500 \times 0.39 \times 500$$

$$= 487500 \text{ J}$$

Let $m_1 \text{ g}$ be the amount of ice that melts when the copper block is placed on the ice block.

The heat gained by the melted ice, $Q = m_1L$

$$\therefore m_1 = Q / L = 487500 / 335 = 1455.22 \text{ g}$$

<https://www.indcareer.com/schools/ncert-solutions-for-11th-class-physics-chapter-11-thermal-properties-of-matter/>

Hence, the maximum amount of ice that can melt is 1.45 kg.

11.14. In an experiment on the specific heat of a metal, a 0.20 kg block of the metal at 150 °C is dropped in a copper calorimeter (of water equivalent 0.025 kg) containing 150 cm³ of water at 27 °C. The final temperature is 40 °C. Compute the specific heat of the metal. If heat losses to the surroundings are not negligible, is your answer greater or smaller than the actual value for specific heat of the metal?

Answer

Mass of the metal, $m = 0.20 \text{ kg} = 200 \text{ g}$

Initial temperature of the metal, $T_1 = 150^\circ\text{C}$

Final temperature of the metal, $T_2 = 40^\circ\text{C}$

Calorimeter has water equivalent of mass, $m' = 0.025 \text{ kg} = 25 \text{ g}$

Volume of water, $V = 150 \text{ cm}^3$

Mass (M) of water at temperature $T = 27^\circ\text{C}$:

$$150 \times 1 = 150 \text{ g}$$

Fall in the temperature of the metal:

$$\Delta T = T_1 - T_2 = 150 - 40 = 110^\circ\text{C}$$

Specific heat of water, $C_w = 4.186 \text{ J/g/}^\circ\text{K}$

Specific heat of the metal = C

Heat lost by the metal, $\theta = mC\Delta T \dots$ (i)

Rise in the temperature of the water and calorimeter system:

<https://www.indcareer.com/schools/ncert-solutions-for-11th-class-physics-chapter-11-thermal-properties-of-matter/>

$$\Delta T' = 40 - 27 = 13^\circ\text{C}$$

Heat gained by the water and calorimeter system:

$$\Delta\theta'' = m_1 C_w \Delta T'$$

$$= (M + m') C_w \Delta T' \dots \text{(ii)}$$

Heat lost by the metal = Heat gained by the water and calorimeter system

$$mC\Delta T = (M + m') C_w \Delta T'$$

$$200 \times C \times 110 = (150 + 25) \times 4.186 \times 13$$

$$\therefore C = (175 \times 4.186 \times 13) / (110 \times 200) = 0.43 \text{ Jg}^{-1}\text{K}^{-1}$$

If some heat is lost to the surroundings, then the value of C will be smaller than the actual value.

Page No: 296

11.15. Given below are observations on molar specific heats at room temperature of some common gases.

Gas	Molar specific heat (C_v) ($\text{cal mol}^{-1} \text{K}^{-1}$)
Hydrogen	4.87
Nitrogen	4.97
Oxygen	5.02
Nitric oxide	4.99
Carbon monoxide	5.01
Chlorine	6.17

Answer

The measured molar specific heats of these gases are markedly different from those for monatomic gases. Typically, molar specific heat of a

<https://www.indcareer.com/schools/ncert-solutions-for-11th-class-physics-chapter-11-thermal-properties-of-matter/>

monatomic gas is 2.92 cal/mol K . Explain this difference. What can you infer from the somewhat larger (than the rest) value for chlorine?

The gases listed in the given table are diatomic. Besides the translational degree of freedom, they have other degrees of freedom (modes of motion).

Heat must be supplied to increase the temperature of these gases. This increases the average energy of all the modes of motion. Hence, the molar specific heat of diatomic gases is more than that of monatomic gases.

If only rotational mode of motion is considered, then the molar specific heat of a diatomic gas = $(5/2)R$

$$= (5/2) \times 1.98 = 4.95 \text{ cal mol}^{-1} \text{ K}^{-1}$$

With the exception of chlorine, all the observations in the given table agree with $(5/2)R$.

This is because at room temperature, chlorine also has vibrational modes of motion besides rotational and translational modes of motion.

11.16. Answer the following questions based on the P - T phase diagram of carbon dioxide:

(a) At what temperature and pressure can the solid, liquid and vapour phases of CO_2 co-exist in equilibrium?

(b) What is the effect of decrease of pressure on the fusion and boiling point of CO_2 ?

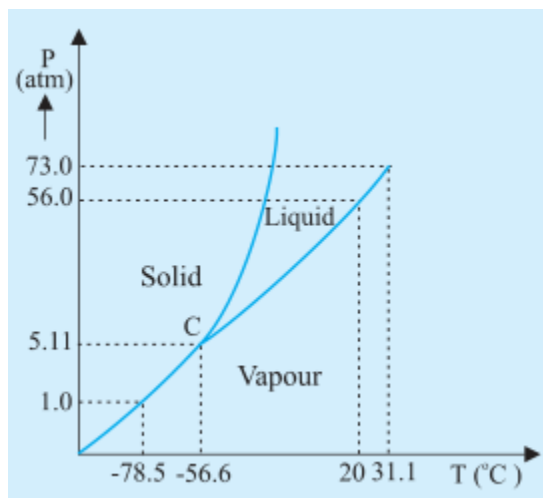
(c) What are the critical temperature and pressure for CO_2 ? What is their significance?

(d) Is CO_2 solid, liquid or gas at (a) -70°C under 1 atm, (b) -60°C under 10 atm, (c) 15°C under 56 atm?

Answer

<https://www.indcareer.com/schools/ncert-solutions-for-11th-class-physics-chapter-11-thermal-properties-of-matter/>

The P - T phase diagram for CO_2 is shown in the following figure:



(a) The solid, liquid and vapour phase of carbon dioxide exist in equilibrium at the triple point, i.e., temperature = -56.6°C and pressure = 5.11 atm.

(b) With the decrease in pressure, both the fusion and boiling point of carbon dioxide will decrease.

(c) For carbon dioxide, the critical temperature is 31.1°C and critical pressure is 73.0 atm. If the temperature of carbon dioxide is more than 31.1°C , it can not be liquified, however large pressure we may apply.

(d) Carbon dioxide will be (a) a vapour, at 70°C under 1 atm. (b) a solid, at -6°C under 10 atm (c) a liquid, at 15°C under 56 atm.

NCERT 11th Physics Chapter 11

11.17. Answer the following questions based on the P - T phase diagram of CO_2 :

(a) CO_2 at 1 atm pressure and temperature -60°C is compressed isothermally. Does it go through a liquid phase?

<https://www.indcareer.com/schools/ncert-solutions-for-11th-class-physics-chapter-11-thermal-properties-of-matter/>

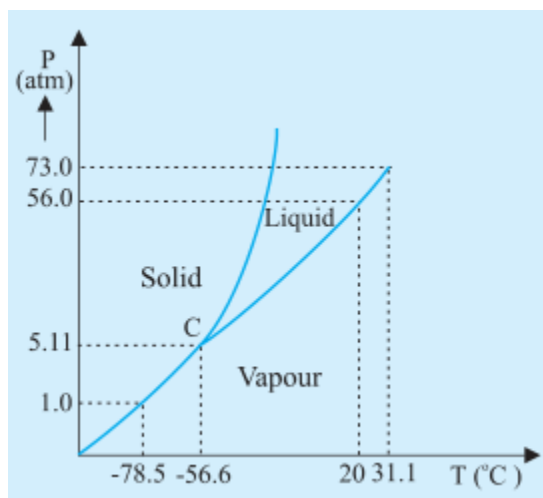
(b) What happens when CO_2 at 4 atm pressure is cooled from room temperature at constant pressure?

(c) Describe qualitatively the changes in a given mass of solid CO_2 at 10 atm pressure and temperature -65°C as it is heated up to room temperature at constant pressure.

(d) CO_2 is heated to a temperature 70°C and compressed isothermally. What changes in its properties do you expect to observe?

Answer

The P - T phase diagram for CO_2 is shown in the following figure:



(a) Since the temperature -60°C lies to the left of 56.6°C on the curve i.e. lies in the region vapour and solid phase, so carbon dioxide will condense directly into the solid without becoming liquid.

(b) Since the pressure 4 atm is less than 5.11 atm the carbon dioxide will condense directly into solid without becoming liquid.

(c) When a solid CO_2 at 10 atm pressure and -65°C temperature is heated, it is first converted into liquid. A further increase in temperature brings it into <https://www.indcareer.com/schools/ncert-solutions-for-11th-class-physics-chapter-11-thermal-properties-of-matter/>

the vapour phase. At $P = 10$ atm, if a horizontal line is drawn parallel to the T-axis, then the points of intersection of this line with the fusion and vaporization curve will give the fusion and boiling points of CO_2 at 10 atm.

(d) Since 70°C is higher than the critical temperature of CO_2 , so the CO_2 gas can not be converted into liquid state on being compressed isothermally at 70°C . It will remain in the vapour state. However, the gas will depart more and more from its perfect gas behaviour with the increase in pressure.

11.18. A child running a temperature of 101°F is given an antipyrin (i.e. a medicine that lowers fever) which causes an increase in the rate of evaporation of sweat from his body. If the fever is brought down to 98°F in 20 min, what is the average rate of extra evaporation caused, by the drug? Assume the evaporation mechanism to be the only way by which heat is lost. The mass of the child is 30 kg. The specific heat of human body is approximately the same as that of water, and latent heat of evaporation of water at that temperature is about 580 cal g^{-1} .

Answer

Initial temperature of the body of the child, $T_1 = 101^\circ\text{F}$

Final temperature of the body of the child, $T_2 = 98^\circ\text{F}$

Change in temperature, $\Delta T = [(101 - 98) \times (5/9)]^\circ\text{C}$

Time taken to reduce the temperature, $t = 20$ min

Mass of the child, $m = 30\text{ kg} = 30 \times 10^3\text{ g}$

Specific heat of the human body = Specific heat of water = c

= $1000\text{ cal/kg/}^\circ\text{C}$

Latent heat of evaporation of water, $L = 580\text{ cal g}^{-1}$

<https://www.indcareer.com/schools/ncert-solutions-for-11th-class-physics-chapter-11-thermal-properties-of-matter/>

The heat lost by the child is given as:

$$\Delta\theta = mc\Delta T$$

$$= 30 \times 1000 \times (101 - 98) \times (5/9)$$

$$= 50000 \text{ cal}$$

Let m_1 be the mass of the water evaporated from the child's body in 20 min.

Loss of heat through water is given by:

$$\Delta\theta = m_1 L$$

$$\therefore m_1 = \Delta\theta / L$$

$$= (50000 / 580) = 86.2 \text{ g}$$

$$\therefore \text{Average rate of extra evaporation caused by the drug} = m_1 / t$$

$$= 86.2 / 200$$

$$= 4.3 \text{ g/min.}$$

11.19. A 'thermacole' icebox is a cheap and efficient method for storing small quantities of cooked food in summer in particular. A cubical icebox of side 30 cm has a thickness of 5.0 cm. If 4.0 kg of ice is put in the box, estimate the amount of ice remaining after 6 h. The outside temperature is 45 °C, and co-efficient of thermal conductivity of thermacole is 0.01 J s⁻¹ m⁻¹ K⁻¹. [Heat of fusion of water = 335 × 10³ J kg⁻¹]

Answer

Side of the given cubical ice box, $s = 30 \text{ cm} = 0.3 \text{ m}$

Thickness of the ice box, $l = 5.0 \text{ cm} = 0.05 \text{ m}$

<https://www.indcareer.com/schools/ncert-solutions-for-11th-class-physics-chapter-11-thermal-properties-of-matter/>

Mass of ice kept in the ice box, $m = 4 \text{ kg}$

Time gap, $t = 6 \text{ h} = 6 \times 60 \times 60 \text{ s}$

Outside temperature, $T = 45^\circ\text{C}$

Coefficient of thermal conductivity of thermacole, $K = 0.01 \text{ J s}^{-1} \text{ m}^{-1} \text{ K}^{-1}$

Heat of fusion of water, $L = 335 \times 10^3 \text{ J kg}^{-1}$

Let m' be the total amount of ice that melts in 6 h.

The amount of heat lost by the food:

$$\theta = KA(T - o)t / l$$

Where,

$$A = \text{Surface area of the box} = 6s^2 = 6 \times (0.3)^2 = 0.54 \text{ m}^2$$

$$\theta = 0.01 \times 0.54 \times 45 \times 6 \times 60 \times 60 / 0.05 = 104976 \text{ J}$$

$$\text{But } \theta = m'L$$

$$\therefore m' = \theta/L$$

$$= 104976 / (335 \times 10^3) = 0.313 \text{ kg}$$

$$\text{Mass of ice left} = 4 - 0.313 = 3.687 \text{ kg}$$

Hence, the amount of ice remaining after 6 h is 3.687 kg.

11.20. A brass boiler has a base area of 0.15 m^2 and thickness 1.0 cm . It boils water at the rate of 6.0 kg/min when placed on a gas stove. Estimate the temperature of the part of the flame in contact with the boiler. Thermal conductivity of brass = $109 \text{ J s}^{-1} \text{ m}^{-1} \text{ K}^{-1}$; Heat of vaporisation of water = $2256 \times 10^3 \text{ J kg}^{-1}$.

<https://www.indcareer.com/schools/ncert-solutions-for-11th-class-physics-chapter-11-thermal-properties-of-matter/>

Answer

Base area of the boiler, $A = 0.15 \text{ m}^2$

Thickness of the boiler, $l = 1.0 \text{ cm} = 0.01 \text{ m}$

Boiling rate of water, $R = 6.0 \text{ kg/min}$

Mass, $m = 6 \text{ kg}$

Time, $t = 1 \text{ min} = 60 \text{ s}$

Thermal conductivity of brass, $K = 109 \text{ J s}^{-1} \text{ m}^{-1} \text{ K}^{-1}$

Heat of vaporisation, $L = 2256 \times 10^3 \text{ J kg}^{-1}$

The amount of heat flowing into water through the brass base of the boiler is given by:

$$\theta = KA(T_1 - T_2) t / l \quad \dots\text{(i)}$$

where,

T_1 = Temperature of the flame in contact with the boiler

T_2 = Boiling point of water = 100°C

Heat required for boiling the water:

$$\theta = mL \dots \text{(ii)}$$

Equating equations **(i)** and **(ii)**, we get:

$$\therefore mL = KA(T_1 - T_2) t / l$$

$$T_1 - T_2 = mLl / KAt$$

<https://www.indcareer.com/schools/ncert-solutions-for-11th-class-physics-chapter-11-thermal-properties-of-matter/>

$$= 6 \times 2256 \times 10^3 \times 0.01 / (109 \times 0.15 \times 60)$$
$$= 137.98 \text{ } ^\circ \text{C}$$

Therefore, the temperature of the part of the flame in contact with the boiler is 237.98°C .

Page No: 297

11.21. Explain why:

- (a) a body with large reflectivity is a poor emitter**
- (b) a brass tumbler feels much colder than a wooden tray on a chilly day**
- (c) an optical pyrometer (for measuring high temperatures) calibrated for an ideal black body radiation gives too low a value for the temperature of a red hot iron piece in the open, but gives a correct value for the temperature when the same piece is in the furnace**
- (d) the earth without its atmosphere would be inhospitably cold**
- (e) heating systems based on circulation of steam are more efficient in warming a building than those based on circulation of hot water**

Answer

(a) A body with a large reflectivity is a poor absorber of light radiations. A poor absorber will in turn be a poor emitter of radiations. Hence, a body with a large reflectivity is a poor emitter.

(b) Brass is a good conductor of heat. When one touches a brass tumbler, heat is conducted from the body to the brass tumbler easily. Hence, the temperature of the body reduces to a lower value and one feels cooler.

<https://www.indcareer.com/schools/ncert-solutions-for-11th-class-physics-chapter-11-thermal-properties-of-matter/>

Wood is a poor conductor of heat. When one touches a wooden tray, very little heat is conducted from the body to the wooden tray. Hence, there is only a negligible drop in the temperature of the body and one does not feel cool.

Thus, a brass tumbler feels colder than a wooden tray on a chilly day.

(c) An optical pyrometer calibrated for an ideal black body radiation gives too low a value for temperature of a red hot iron piece kept in the open.

Black body radiation equation is given by:

$$E = \sigma (T^4 - T_0^4)$$

Where,

E = Energy radiation

T = Temperature of optical pyrometer

T_0 = Temperature of open space

σ = Constant

Hence, an increase in the temperature of open space reduces the radiation energy.

When the same piece of iron is placed in a furnace, the radiation energy, $E = \sigma T^4$

(d) Without its atmosphere, earth would be inhospitably cold. In the absence of atmospheric gases, no extra heat will be trapped. All the heat would be radiated back from earth's surface.

(e) A heating system based on the circulation of steam is more efficient in warming a building than that based on the circulation of hot water. This is because steam contains surplus heat in the form of latent heat (540 cal/g).

<https://www.indcareer.com/schools/ncert-solutions-for-11th-class-physics-chapter-11-thermal-properties-of-matter/>

11.22. A body cools from 80 °C to 50 °C in 5 minutes. Calculate the time it takes to cool from 60 °C to 30 °C. The temperature of the surroundings is 20 °C.

Answer

According to Newton's law of cooling, we have:

$$(-dT/T) = K(T - T_0)$$

$$dT / K(T - T_0) = -Kdt \quad \dots(i)$$

Where,

Temperature of the body = T

Temperature of the surroundings = $T_0 = 20^\circ\text{C}$

K is a constant

Temperature of the body falls from 80°C to 50°C in time, $t = 5 \text{ min} = 300 \text{ s}$

Integrating equation (i), we get:

$$\int_{50}^{80} \frac{dT}{K(T - T_0)} = - \int_0^{300} K dt$$

$$[\log_e (T - T_0)]_{50}^{80} = -K[t]_0^{300}$$

$$\frac{2.3026}{K} \log_{10} \frac{80 - 20}{50 - 20} = -300$$

$$\frac{2.3026}{K} \log_{10} 2 = -300$$

$$\frac{-2.3026}{300} \log_{10} 2 = K \quad \dots (ii)$$

The temperature of the body falls from 60°C to 30°C in time = t'

Hence, we get:

$$\frac{2.3026}{K} \log_{10} \frac{60 - 20}{30 - 20} = -t'$$

$$\frac{-2.3026}{t'} \log_{10} 4 = K \quad \dots (iii)$$

Equating (ii) and (iii), we get:

$$\frac{-2.3026}{t'} \log_{10} 4 = \frac{-2.3026}{300} \log_{10} 2$$

$$\therefore t' = 300 \times 2 = 600 \text{ s} = 10 \text{ min}$$

Therefore, the time taken to cool the body from 60°C to 30°C is 10 minutes.



Chapterwise NCERT Solutions for Class 11 Physics:

- Chapter 1-Physical World
- Chapter 2-Units and Measurements
- Chapter 3-Motion In A Straight Line
- Chapter 4-Motion In A Plane
- Chapter 5-Laws Of Motion
- Chapter 6-Work, Energy And Power
- Chapter 7-System Of Particles And Rotational Motion
- Chapter 8-Gravitation
- Chapter 9-Mechanical properties of Solids
- Chapter 10-Mechanical Properties of Fluids
- Chapter 11-Thermal Properties of Matter
- Chapter 12-Thermodynamics
- Chapter 13-Kinetic Theory
- Chapter 14-Oscillations
- Chapter 15-Wave

<https://www.indcareer.com/schools/ncert-solutions-for-11th-class-physics-chapter-11-thermal-properties-of-matter/>

About NCERT

The National Council of Educational Research and Training is an autonomous organization of the Government of India which was established in 1961 as a literary, scientific, and charitable Society under the Societies Registration Act. The major objectives of NCERT and its constituent units are to: undertake, promote and coordinate research in areas related to school education; prepare and publish model textbooks, supplementary material, newsletters, journals and develop educational kits, multimedia digital materials, etc.

Organise pre-service and in-service training of teachers; develop and disseminate innovative educational techniques and practices; collaborate and network with state educational departments, universities, NGOs and other educational institutions; act as a clearing house for ideas and information in matters related to school education; and act as a nodal agency for achieving the goals of Universalisation of Elementary Education.

Its headquarters are located at Sri Aurobindo Marg in New Delhi.

[Visit the Official NCERT website](#) to learn more.

<https://www.indcareer.com/schools/ncert-solutions-for-11th-class-physics-chapter-11-thermal-properties-of-matter/>